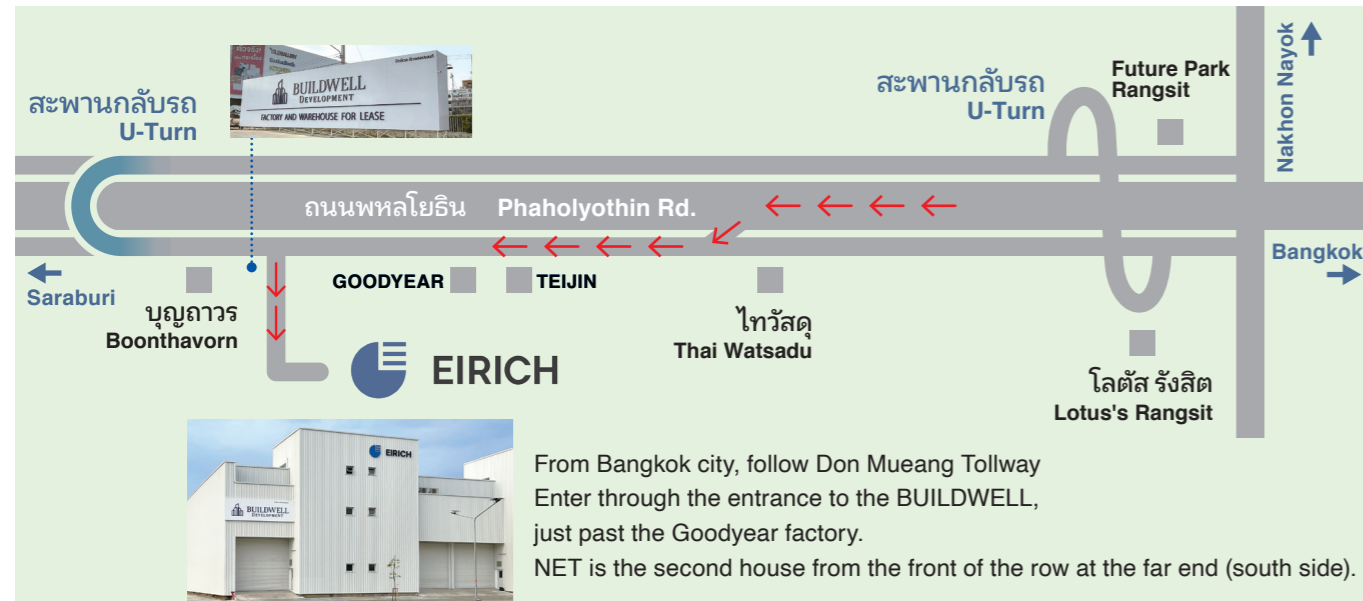


Company Overview

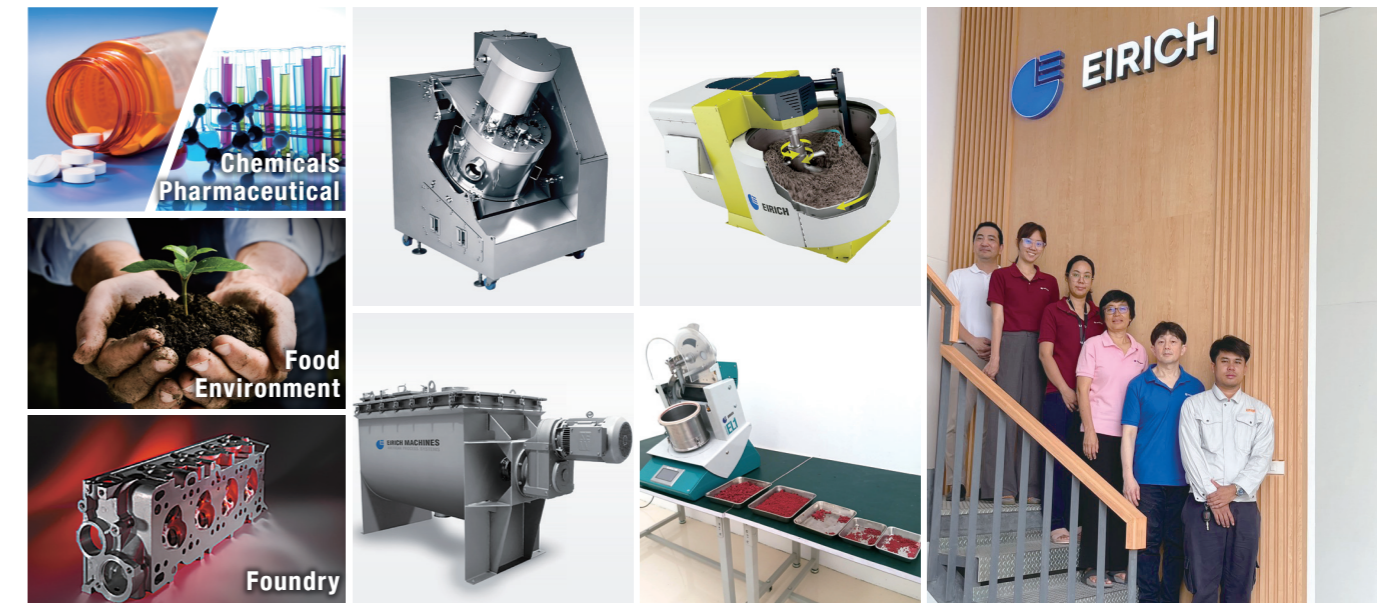
Company name	Eirich (Thailand) Co., Ltd. (Abbreviated name: NET)	Business Fields	Equipment Sales (imports and sales)
Location	E2 Buildwell Development 62/37 Moo3, Khlong-Nueng, Khlong-Luang, Pathumthani, 12120 Thailand	EIRICH	- EIRICH Intensive Mixer - EVACTHERM® - EIRICH CleanLine - OptimaBlend™ - EIRICH TowerMill
Board members	Masamoto NAITO, Representative Director Kamnoon Srethbhakdi, Representative Director Naoya SUNAKAWA, Director	Jöst	- Vibrating Equipment - Shakeout Machine
Capital	10,000thousand THB	Parts sales and Maintenance service	- Parts sales and maintenance service for Eirich products - Installation of Eirich products
Establishment	November 15th, 2022	Test Center	- Basic tests on powders and granulates - Support of Nippon Eirich's consulting services
Main bank	Bank of Ayudhya, Future Park Rangsit		
Employee	7 (as of May 2023)		

E2 Buildwell Development

62/37 หมู่ 3 ตำบลคลองหนึ่ง อำเภอคลองหลวง จังหวัดปทุมธานี 12120
62/37 Moo 3, Khlong Nueng, Khlong Luang, Pathumthani, 12120.
Tel. 02-8533524-26 Fax.02-8533527



Corporate Profile



Eirich (Thailand) Co., Ltd.
EIRICH GROUP

EIRICH GROUP



Our Technologies Produce Better Products in Many Fields.



Technical Chemicals
Primary · Secondary Battery/
Li-ion Battery · Capacitor/
Fuel Cell/Friction Materials



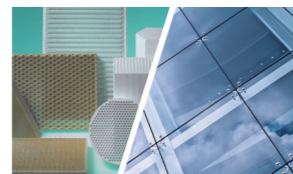
Building Materials
Siding/Roofing Tiles/
Inter Locking Block/
Concrete · Dry Mortar · Plaster



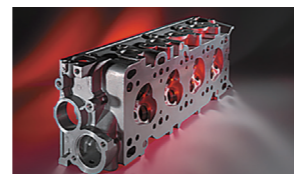
Environmental Protection
Ash · Coal ash/Iron Dust/
Industrial Sludge/
Contaminated Soil



Food/ Agricultural Chemistry
Food/Fertilizer/Animal Feed/
Agricultural Chemical/
Culture Soil



Ceramics/Glass
FPD Glass/Sheet Glass/Tile/
Refractory/Graphite Products/
Electronic Components/Catalyst



Foundry
Molding Sand



Pharmaceuticals/ Chemicals/Cosmetics
Pharmaceuticals/Chemical
Materials/Silicone/Detergent/
Soap/Cosmetics



Surface Treatment
Color Resist/Pigment/Ink/
Paint/Coating Material



Metallurgy
Iron Ore/Non-Ferrous Ore/
Welding Material

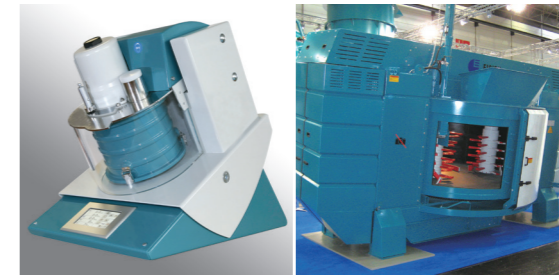
Products

Mixing Technology

EIRICH Intensive Mixer

High-Performance Mixers with a Unique Principle

EIRICH Intensive Mixer is a high-performance mixer which has an ideal mixing mechanism realized by advanced technologies. Each process, such as mixing, kneading, pelletizing and slurring etc, can be combined. There is a wide product lineup with the effective capacities between 1 and 12,000 liters, and the most appropriate model can be selected based on requests. These Intensive Mixers are being widely used as the heart of production lines in a wide variety of industries and for different purposes.



- Optimum homogenization of process materials
- Quality stability
- Significantly reduced processing time
- Little wear
- Low maintenance design
- Batchwise or continuous mode of operation

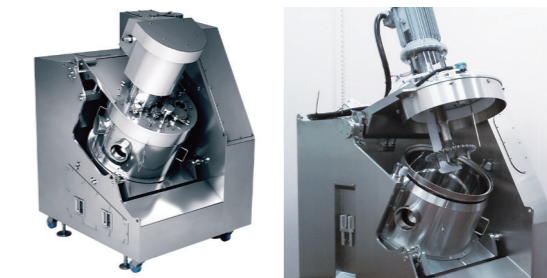
Type	Capacity		Working principal	
	Liters	kg max.	batch	Continuous
EL1	1	1.6	■	
R02	3-5	8	■	
R05T	40	65	■	
}	}	}	}	
R12	250	400	■	■
R16	600	960	■	■
}	}	}	}	}
R28	4,000-5,500	6,400-8,000	■	■
R33	6,000-8,000	9,600-12,800	■	■

Hygienic Mixing Technology

EIRICH CleanLine

Mixer for Food, Pharmaceutical and High Functionality Materials

Developed for processing food/medicines and high-functionality materials, CleanLine reflects Japan's original improvements and functions to flexibly suit the Japanese customers' applications. While fulfilling the EHEDG Guidelines requirements just as C5, CleanLine is also pursuant to Food Sanitation Act and GMP of Japan, with much improved usability.



- Mixer inclination mechanism
- The mixing pan can be inclined or horizontally positioned according to the properties of raw materials.
- Waterproof and cleanable flat structure
- Widely-adjustable rotor speeds
- GMP compliant as option

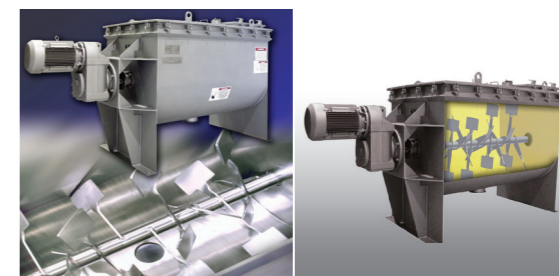
Type	Capacity		Working principal	
	Liters	kg max.	batch	Continuous
C5	5	10	■	
C40	40	65	■	
C400	250	400	■	

Hygienic Mixing Technology

OptimaBlend®

Fluidizing Paddle Blender

Eirich Machines Inc. in EIRICH group presents capable of preparing a homogenous mix independent of particle size, shape or density. The unique agitation ensures rapid yet gentle blending, short mixing cycles, low operating costs, minimal product degradation and one of the highest production capacities of any mixer type.



- High particle movement
- Homogeneous mixing
- 30-60 second times typical
- Increased production capacity
- Low shear design
- Ideal for manual and automated systems

Type	Capacity	kW
	Liters	
FPB-1.5	42	2.2
FPB-5	142	2.2
}	}	}
FPB-300	8,500	75

*depend on applications